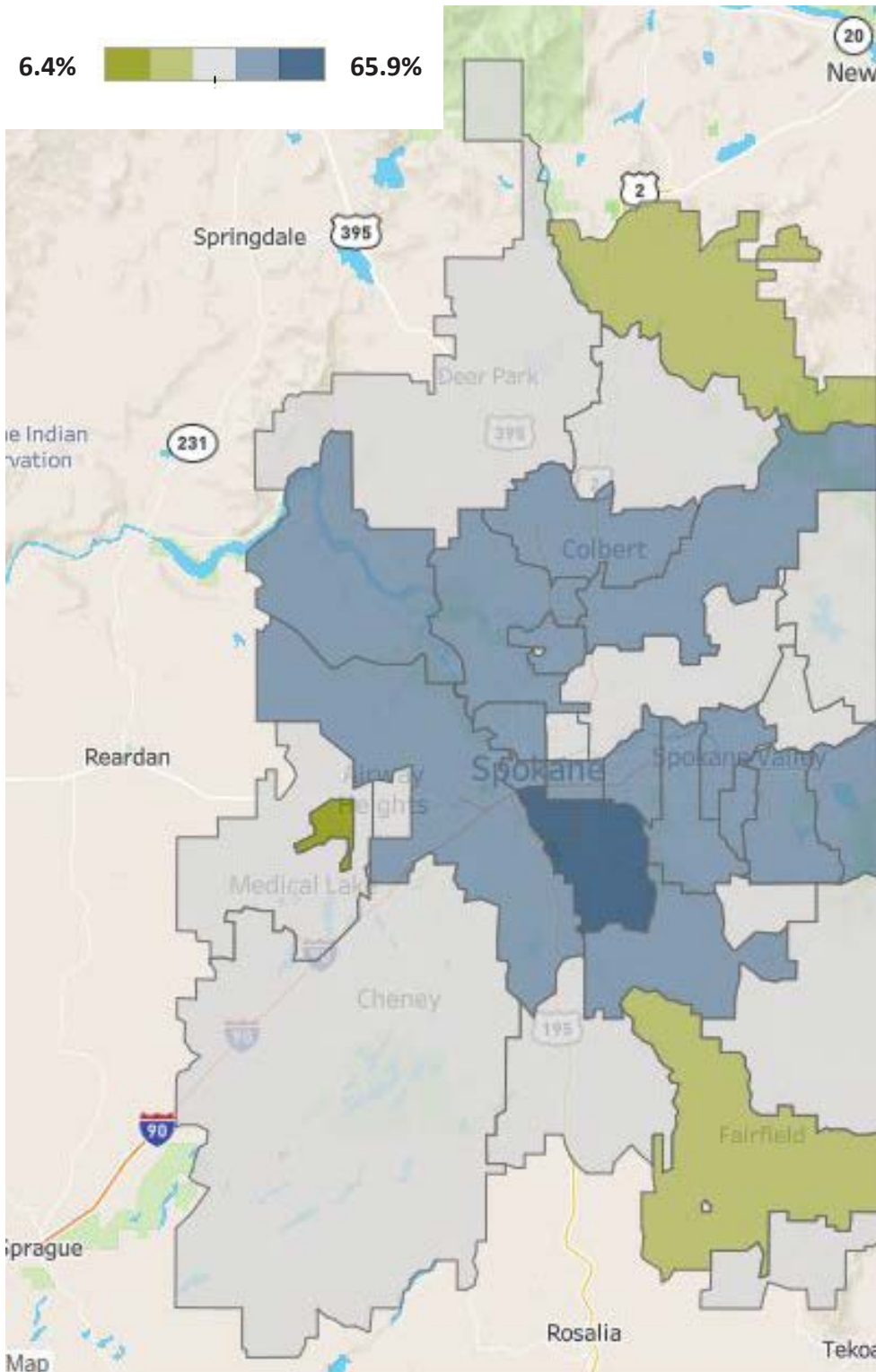




Spokane County

Vaccination Data by ZIP Code

People Who Have Received at Least One Dose of COVID-19 Vaccine



ZIP Code	# of People	% of People
99251	384	35.90%
99224	11151	47.40%
99223	18612	57.90%
99218	7310	51.20%
99217	7633	39.90%
99216	11008	42.40%
99212	9393	46.00%
99208	27517	50.00%
99207	12414	39.80%
99206	16862	45.10%
99205	19755	46.80%
99204	3861	57.40%
99203	13574	65.90%
99202	9128	42.20%
99201	8354	52.20%
99039	47	36.40%
99037	7413	45.00%
99036	814	50.10%
99031	505	38.30%
99030	343	34.30%
99027	2587	39.50%
99026	4298	45.20%
99025	1830	34.20%
99023	233	37.50%
99022	3595	37.90%
99021	4321	44.60%
99019	5916	51.40%
99018	84	30.70%
99016	7945	47.10%
99012	334	30.20%
99011	164	6.40%
99009	1200	28.70%
99006	4558	34.00%
99005	4653	47.80%
99004	8833	41.90%
99003	2034	38.60%
99001	2946	38.50%



Data Center
1101 W. College Ave., Spokane, WA 99201 | 509.323.2853 | srhd.org

These data are tentative and subject to change. The rates represent those who have received at least one vaccination dose, and the rate is a percentage of total population in the ZIP Code. // Spokane Regional Health District assures nondiscrimination in accordance with Title VI of the Civil Rights Act of 1964 and the Americans with Disabilities Act. To file a complaint or to request more information, reasonable accommodations, or language translations, contact 509.324.1501 or visit srhd.org.

Source: Spokane Regional Health District