



Spokane Regional Health District · www.srhd.org



Spokane Counts 2015

A summary of 59 selected public health indicators

Food & Waterborne Disease

Environmental



Indicator: Food and Waterborne Diseases

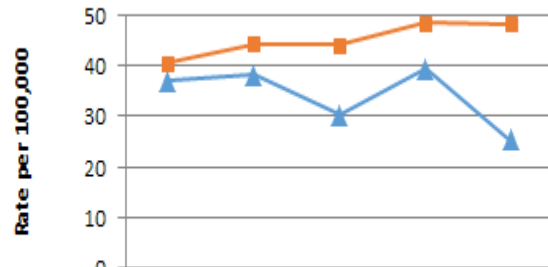
Definition: Rate per 100,000 for campylobacteriosis, E. coli, giardiasis, listeriosis, salmonellosis, and shigellosis.

Why this is important: Over time, environmental public health efforts have greatly reduced the occurrence of food and waterborne illness. In the U.S., enteric illnesses were the fourth leading cause of death 100 years ago, but today they are not usually life threatening. Still, many individuals contract food or waterborne illness each year. Preventing food and waterborne disease remains a major public health challenge.

Where we are: In 2013 in Spokane County, there were 122 food and waterborne illnesses. The rate of food and waterborne disease in Spokane County significantly decreased from 2009 to 2013. Spokane County had a rate of food and waterborne disease significantly lower than that of Washington state in 2009-2013.

Health Disparities:

Food and Waterborne Diseases Over Time



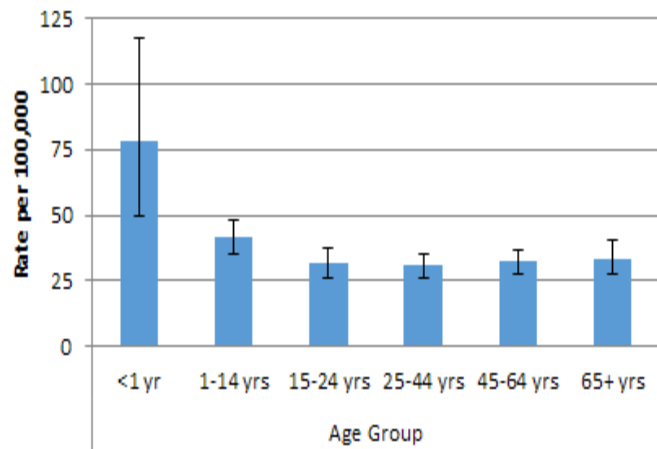
| | 2009 | 2010 | 2011 | 2012 | 2013 |
|------------------|------|------|------|------|------|
| Spokane County | 37.1 | 38.2 | 30.3 | 39.3 | 25.4 |
| Washington State | 40.5 | 44.3 | 44.1 | 48.4 | 48.3 |

(click to enlarge)

Among Spokane County residents in 2009-2013:

- Food and waterborne illnesses decreased as age increased.
- There was no difference in food and waterborne illnesses between males and females.

Disparities in Food and Waterborne Diseases
Spokane County, 2009-2013



(click to enlarge)

| | | |
|-----------|------------------|---------------------|
| | Data Source | DOH, CHS, 2009-2013 |
| | | Rate per 100,000 |
| Geography | Spokane County | 34.0 (31.7-36.5) |
| | Washington state | 45.2 (44.4-45.9) |
| | United States | Not Available |
| | Trend | 2009-2013 Decrease |
| Age | <1 yr | 78.2 (49.6-117.3) |
| | 1-14 yrs | 41.3 (35.4-47.9) |
| | 15-24 yrs | 31.5 (26-37.8) |
| | 25-44 yrs | 30.6 (26.3-35.4) |
| | 45-64 yrs | 32.2 (27.9-36.9) |
| | 65+ yrs | 33.4 (27.3-40.4) |
| Sex | Male | 32.2 (29.1-35.7) |
| | Female | 35.6 (32.3-39.2) |

Data Source: Washington State Department of Health, Center for Health Statistics. Calculations and presentation of data by Spokane Regional Health District, Data Center.

Spokane Regional Health District · Data Center · 1101 W College Ave, Room 356, Spokane, WA 99201
509.323.2853 | FAX 509.232.1706 | TDD 509.324.1464 · www.srhd.org/spokanecounts

Demographics

Indicator Overview

Executive Summary

Performance Measures